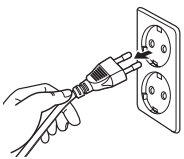


# DIGITAL DISPLAY FIRST INSTRUCTIONS

Thank you for choosing a Digital Signage device. To ensure the best performance of your device, we have conducted thorough quality checks before shipping the display to you. The digital has been restored to default settings and has been verified to be in proper working condition.

## Get started



Plug into socket.  
Device will automatically turn itself on.



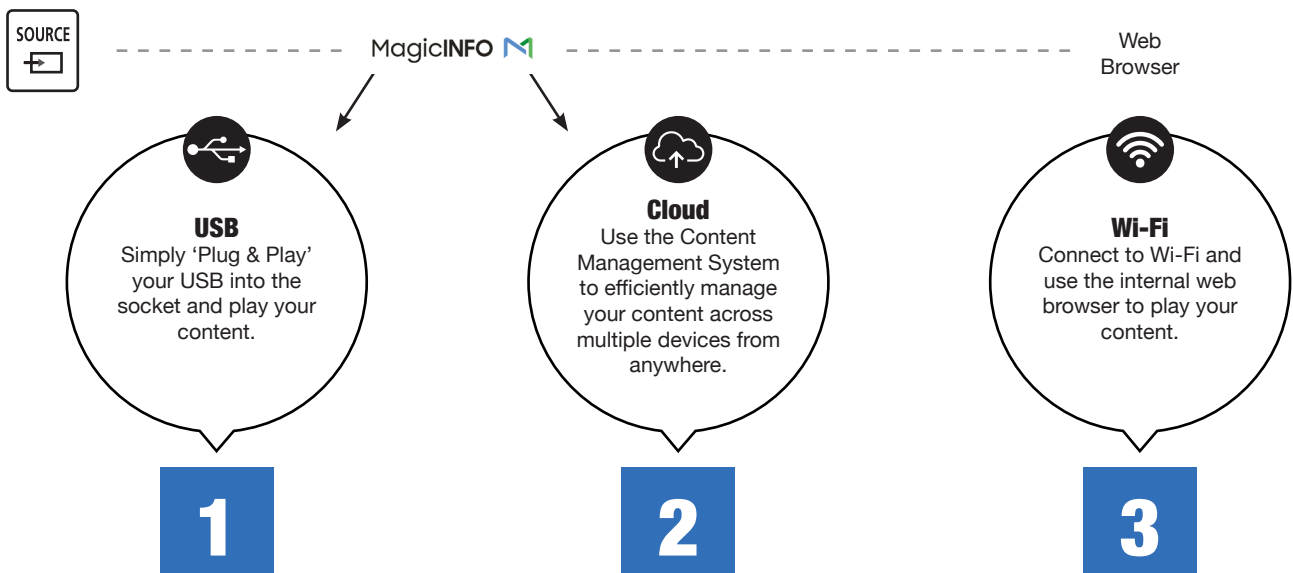
The following basic settings have been made:

- Language: English
- Date, Time: GMT+1
- Screen orientation: Vertical
- Picture mode: Shops & Shopping centres
- Temperature setting: 77°C

Use the remote control to turn the device on/off and to change settings.

## Play your content

Start playing your own content! You can choose various ways to display. Follow the instructions below.



# 1 USB

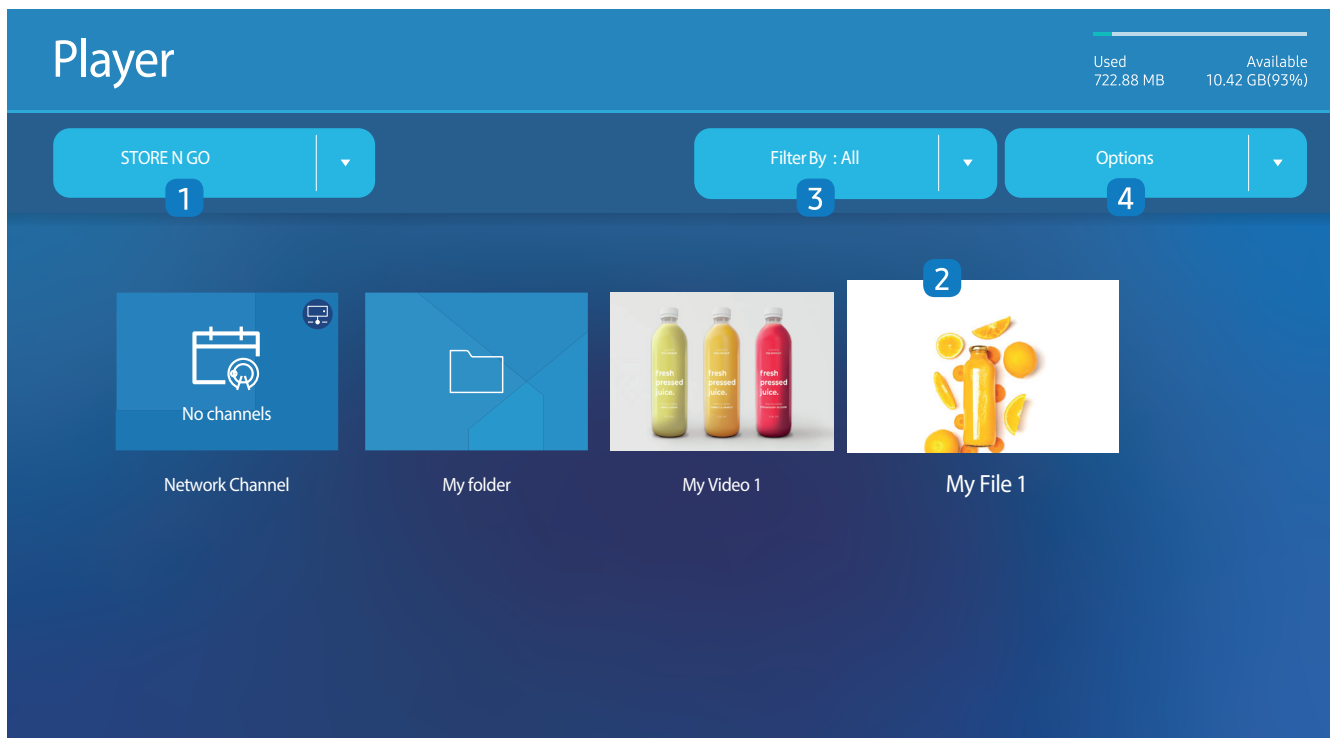
## Plug in your USB drive

HOME  -> Player -> ENTER 

Select between internal or external memory (your USB drive name appear)

## Viewing content

1. Select either internal or external memory. The files, saved in the selected memory, appear.
2. Select the desired file. The content appears on the screen.
3. Select a content type as criterion to search for a desired content list.
4. Set different options for Player.



## File Formats Compatible with Player

- Supported file systems include FAT32 and NTFS.
- A file with a vertical and horizontal resolution larger than the maximum resolution cannot be played. Check the vertical and horizontal resolution of the file.
- Check the supported video and audio Codec types and Versions.
- Check the supported file versions.

PowerPoint version up to 97 – 2013 is supported

For USB-Internal Memory file transfer, click Options -> Send

## Location of template files

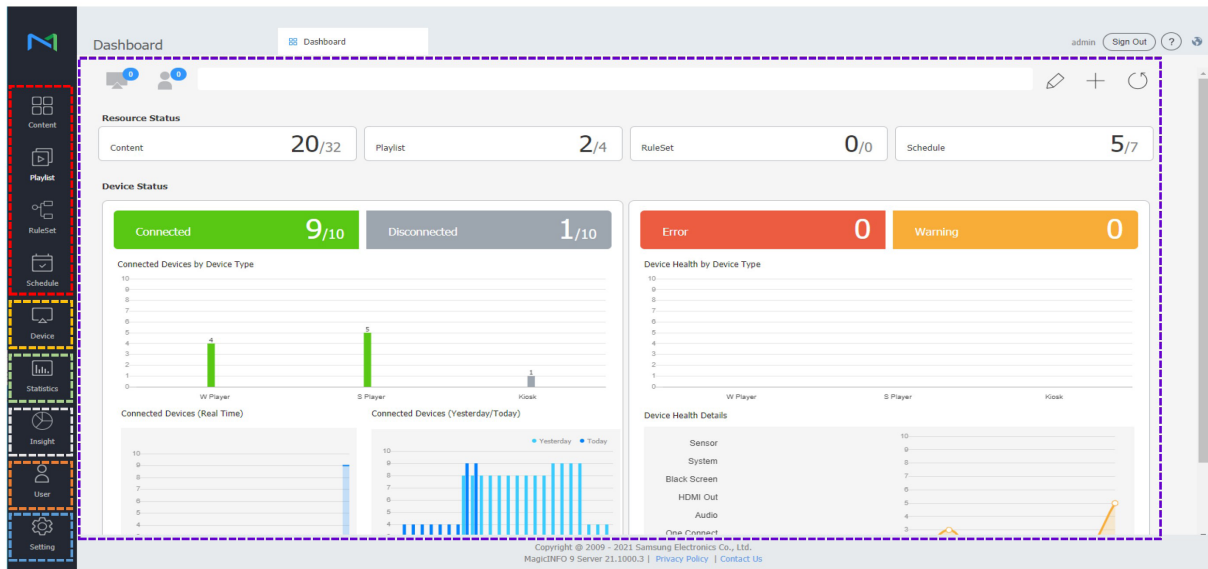
- Internal Memory -> USB transfer: USB under MagicinfoSlide folder
- USB -> Internal Memory transfer: Internal Memory -> under My Templates folder

## Location of other files (non-template)

- Internal Memory -> USB transfer: USB -> under MagicinfoSlide folder
- USB -> Internal Memory transfer: Under the root folder

With MagicINFO Cloud you can play and adjust your content remotely from anywhere in the world. Interested in MagicINFO Cloud? Please contact your supplier. They will get you in contact with Samsung for your MagicINFO Cloud account and connect it to your device. When you have an active MagicINFO Cloud account that is connected to your desired device, you can start to upload or create your content online and send it to your digital display.

## Dashboard of MagicINFO Cloud



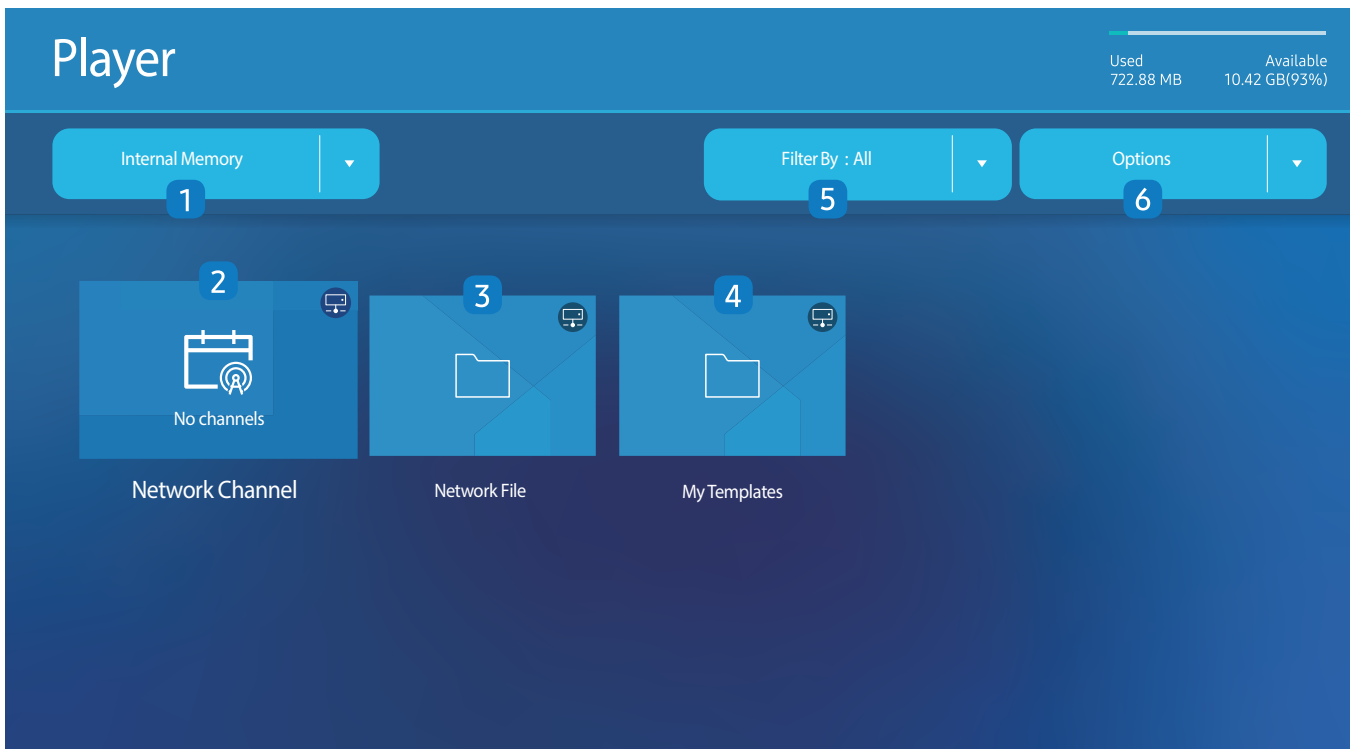
- Content Menu required for creating schedule
- Device Proof of Play
- Schedule Server Total Management
- Device Server Status
- Device Device Management (w/ RM)
- User User Management
- Insight Insight (Add-on Service)

After you scheduled your content, make sure your digital display has the right settings. Follow the instructions below to set you digital display in the right settings for MagicINFO Cloud.

HOME -> Player -> ENTER

Play a range of content such as channels with schedules assigned, templates or files.

1. Select between internal or external memory.
2. Play content, templates and schedules configured on the server. You can view whether the server is connected (approval) in the Player screen. To view whether the server is connected when a Network Channel is running, press INFO on the remote control.
  - a) Select Network Channel from the Player screen. The No channels message appears if no channel has been registered in Network Channel.
  - b) Network Channel will run.
3. Play content stored on the server.
4. Play templates stored in My Templates folder in the Internal Memory.
5. Select a content type as criterion to search for a desired content list.
6. Set different options for Player.



### Viewing content

1. Select either internal or external memory. The files saved in the selected memory appear.
2. Select the desired file. The content appears on the screen.

### File Formats Compatible with Player



- Supported file systems include FAT32 and NTFS.
- A file with a vertical and horizontal resolution larger than the maximum resolution cannot be played. Check the vertical and horizontal resolution of the file.
- Check the supported video and audio Codec types and Versions.
- Check the supported file versions.

PowerPoint version up to 97 – 2013 is supported




# 3

## Web Browser

Connect the network to access the Internet from the product like accessing the Internet from a computer.

SOURCE  -> Web Browser -> ENTER 

### Settings

SOURCE  -> Web Browser ->  -> Settings -> ENTER 

#### *Refresh Interval*

Set the time for the web browser to wait before returning to the home page.

- Off / 5 min / 10 min / 15 min / 30 min

#### *Zoom*

Set the zoom scale to apply when the web browser is refreshed.

- 50% / 75% / 100% / 125% / 150% / 200% / 300%

#### *Home Page*

Set the website to display when the web browser is refreshed.

- Samsung Display / Custom

#### *Custom*

Enter the URL to set as the home page.

- Enter URL

Available only when Home Page is set to Custom.